

June 24–30

Alma 13–16

“Enter into the Rest of the Lord”

Word Angles

Instructions: Find the bold words from the scripture. Each word path may run north, east, south, or west, may make one right-angled turn, and may cross another word path. A few words may make no right angle turn at all.

Alma 13:10–12

Now, as I said concerning the holy order, or this **high priesthood**, there were many who were **ordained** and became high **priests** of God; and it was on account of their exceeding **faith** and **repentance**, and their **righteousness** before God, they choosing to **repent** and **work** righteousness rather than to **perish**; Therefore they were called after this **holy order**, and were **sanctified**, and their garments were washed **white** through the **blood** of the **Lamb**. Now they, after being sanctified by the Holy Ghost, having their garments made white, being pure and spotless before God, could not **look** upon **sin** save it were with **abhorrence**; and there were many, **exceedingly great many**, who were made **pure** and **entered** into the **rest** of the **Lord** their God.

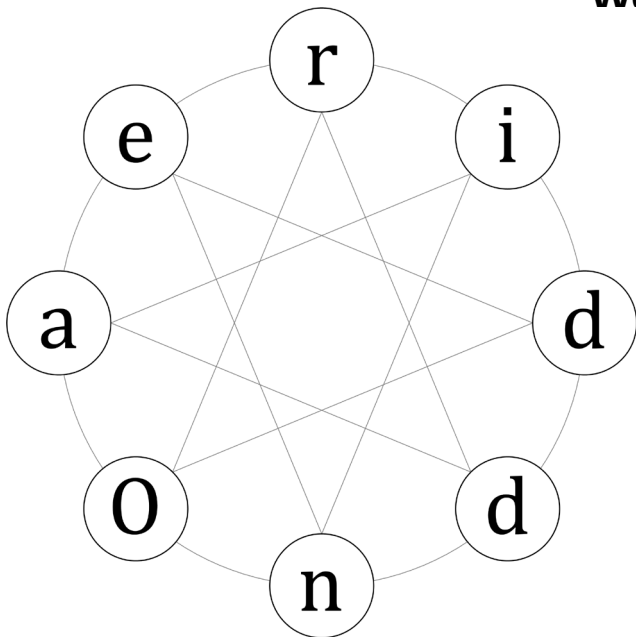
C	M	A	A	I	E	N	T	A	N	C	E	E	R	G	Q
C	H	Y	R	E	P	E	N	L	U	I	C	A	C	T	H
H	O	L	I	T	E	S	P	A	R	G	Z	T	V	Y	H
Y	L	O	I	F	R	T	N	M	I	S	X	G	R	L	I
V	D	O	O	L	B	S	X	B	G	A	Z	G	Y	G	G
D	Y	K	P	R	I	E	U	J	H	X	Y	I	O	N	H
E	A	B	H	O	R	R	G	C	T	A	U	P	R	I	F
I	Q	O	U	T	P	E	C	D	E	N	I	A	D	D	A
F	E	C	S	S	E	N	S	U	O	D	H	U	H	E	I
I	N	H	L	P	K	C	L	M	Y	X	E	X	C	E	T
T	N	I	S	R	H	E	D	R	N	A	M	W	U	W	H
C	N	A	S	I	D	R	O	E	S	T	I	N	S	H	I
R	O	W	K	E	E	S	I	D	E	R	E	R	I	O	T
K	D	R	V	S	R	I	P	L	X	B	T	I	R	M	E
D	O	O	H	T	Y	G	U	R	E	V	N	W	E	X	D
R	E	L	M	W	P	N	Y	V	Q	C	E	M	P	M	U

Word Star

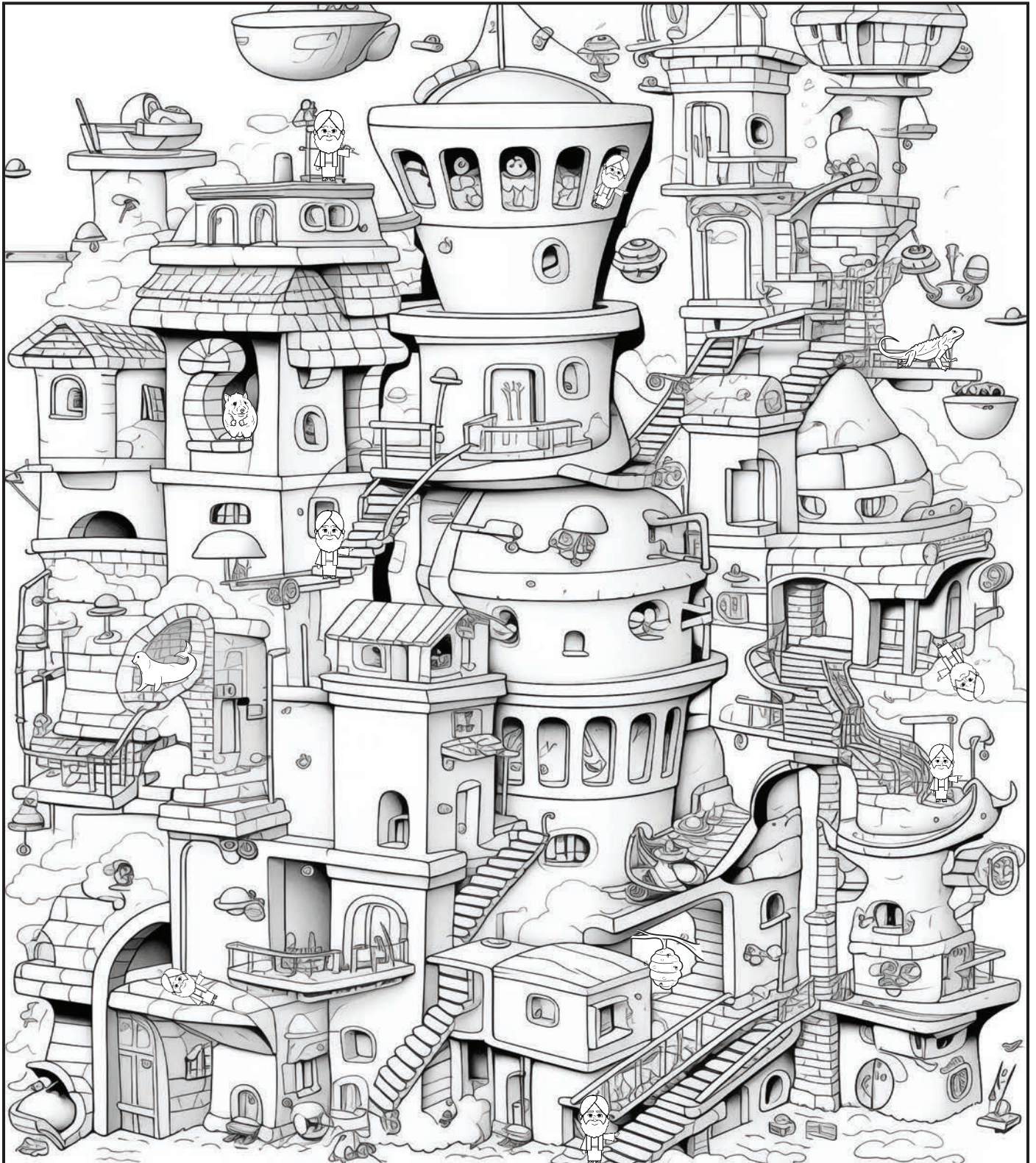
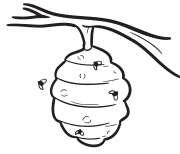
Instructions: Start with the capital letter in the puzzle. Then choose one of the two lines to the next letter. Only one route through the word star will make a word. Write the letters of the word you discover in the blanks below as you travel through the star:

Now can you find this word in the following scripture?

Alma 13:2



Hidden Picture: Alma had great faith in Jesus, which is why he went on a mission to Ammonihah. Can you find 7 pictures of Alma in the hidden picture below? It will be tricky; the picture may be smaller, on its side, or even upside down! Then, see if you can find 1 image of the animals as well.



June 24–30

Alma 13–16

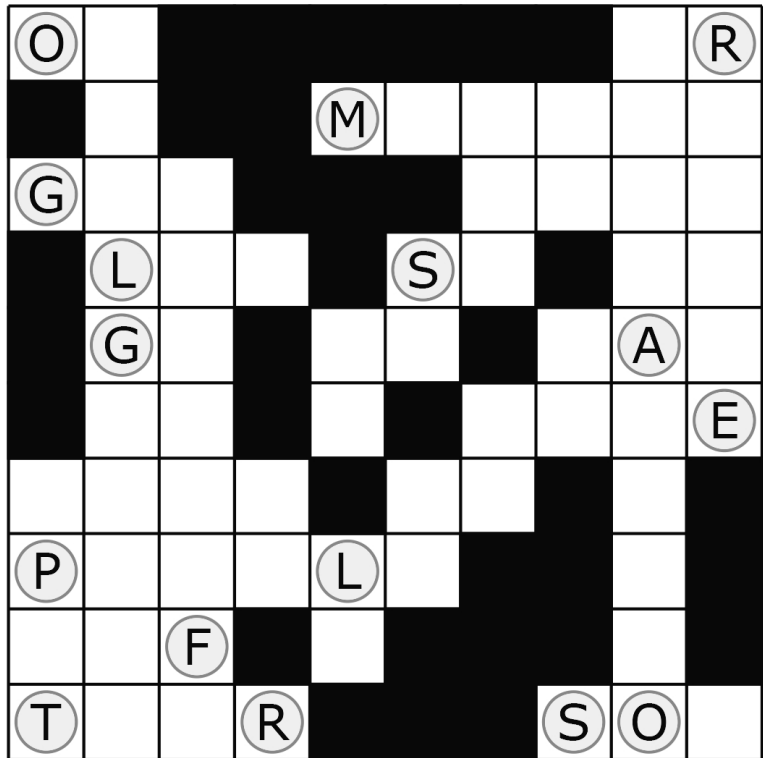
“Enter into the Rest of the Lord”

Reverse Word Search

Instructions: Instead of looking for words in a grid, place the bold words in the scripture in the empty word search puzzle. The words may be forwards, backwards, up, down, or diagonally. The start letter of the words have been placed in the grid to get you started.

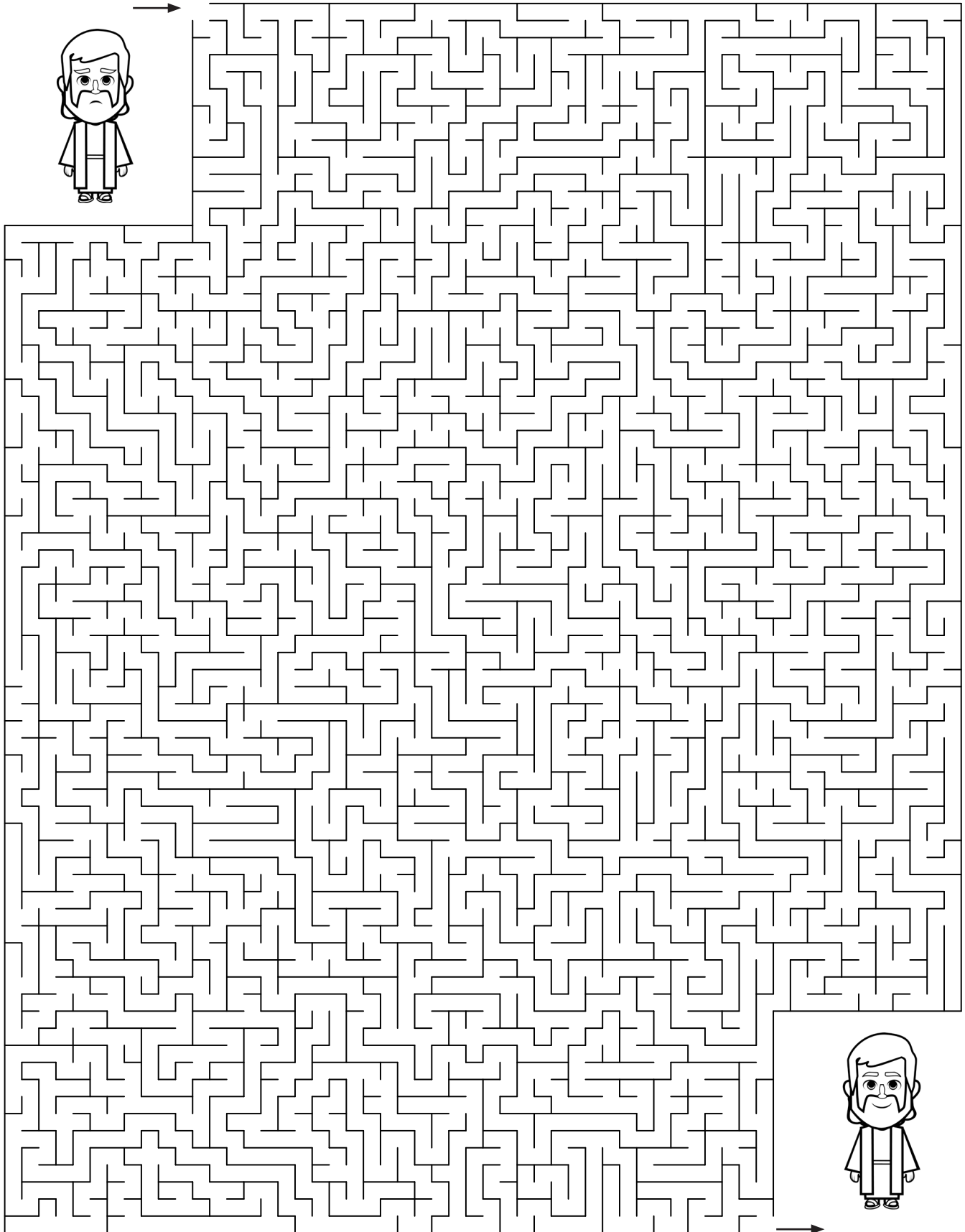
Alma 13:16

Now these **ordinances** were **given** **after** this **manner**, that thereby the **people** might **look forward** on the **Son of God**, it being a **type** of his **order**, or it being his order, and this that they might look forward to him for a **remission** of their **sins**, that they might **enter** into the **rest** of the **Lord**.



Zeezrom And The Change Of Heart

Zeezrom experienced a great change of heart through Jesus Christ. Can you help the unhappy Zeezrom through the maze so he can be happy?



June 24–30

Alma 13–16

“Enter into the Rest of the Lord”

Instructions: Solve this word sudoku puzzle the same way that you’d solve a numeric sudoku. Each of the bold words in the scripture below is found once in every row, column and 3×3 box.

Alma 14:26

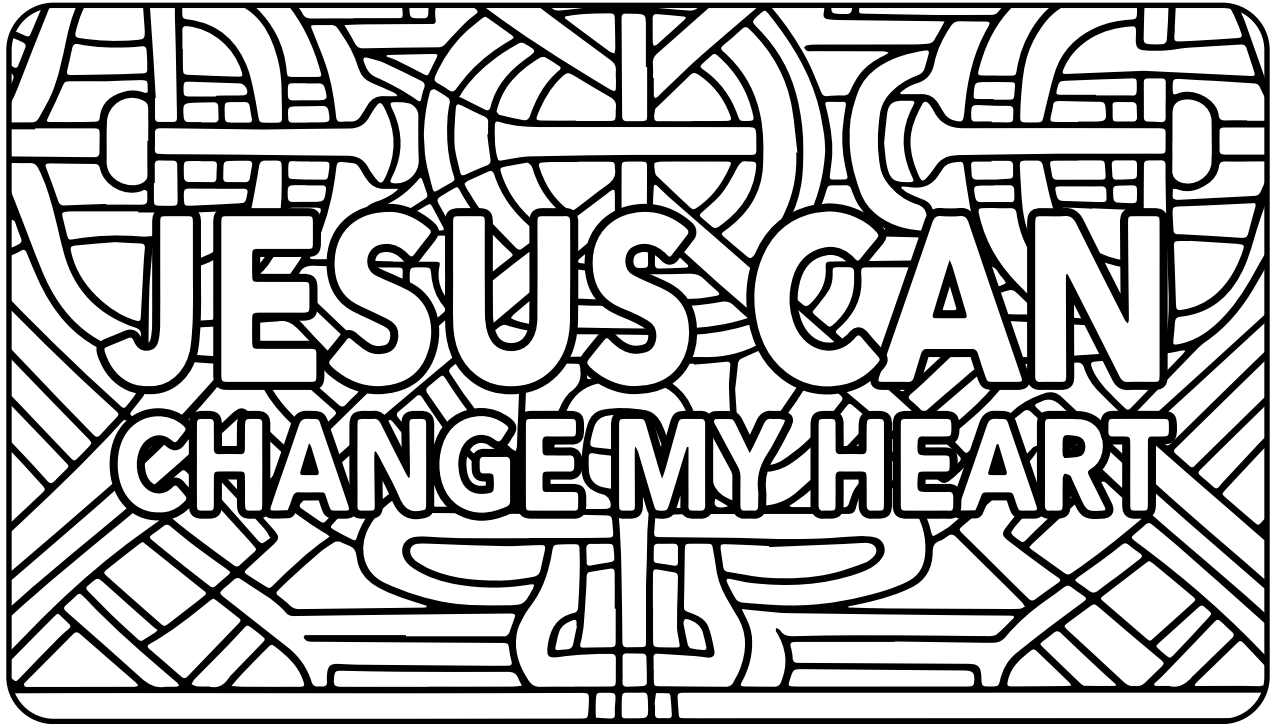
And **Alma** cried, saying: How long shall we suffer these great **afflictions**, O Lord? O Lord, give us **strength** according to our **faith** which is in **Christ**, even unto **deliverance**. And they **broke** the **cords** with which they were bound; and when the people saw this, they began to **flee**, for the fear of destruction had come upon them.

	broke	faith				flee	strength	Christ
Christ		deliverance	strength			faith	Alma	afflictions
	flee	Alma	faith	Christ			deliverance	
Alma	Christ	broke	flee	afflictions			cords	
	afflictions	flee		strength		Alma		faith
	strength	cords		deliverance		Christ	afflictions	flee
broke		Christ	cords	faith	strength			
flee		strength			Christ		faith	broke
cords			deliverance			strength	Christ	Alma

June 24–30

Alma 13–16

“Enter into the Rest of the Lord”



Cryptogram

Instructions: Each letter on the top stands for a letter in the alphabet. Solve the encrypted phrase by matching each letter on top to a letter in the alphabet on the bottom. Use the key to help you remember what the letters stand for so you can crack the code.

D	R	V	Q	G	B	J	K	N	Z	O	H	A	Y	P	F	C	W	X	I	M	L	T	S	E	U
A	B	C	D	E	F	G	H	I	J	K	L	M	N	O	P	Q	R	S	T	U	V	W	X	Y	Z

M I A M V U M X M T A : T P W L K Z F Y V T Y C Y X W

T I W L Y B Y A Y U O W T K I K P Q L B T X W W L K Z

Q M I X W F Y L Y M V Y A . M I A L Y X M T A :

N Y M , T F Y V T Y C Y M Q Q K B A T I E W K W L N

R K B A X . M V U M 1 5 : 8 - 9