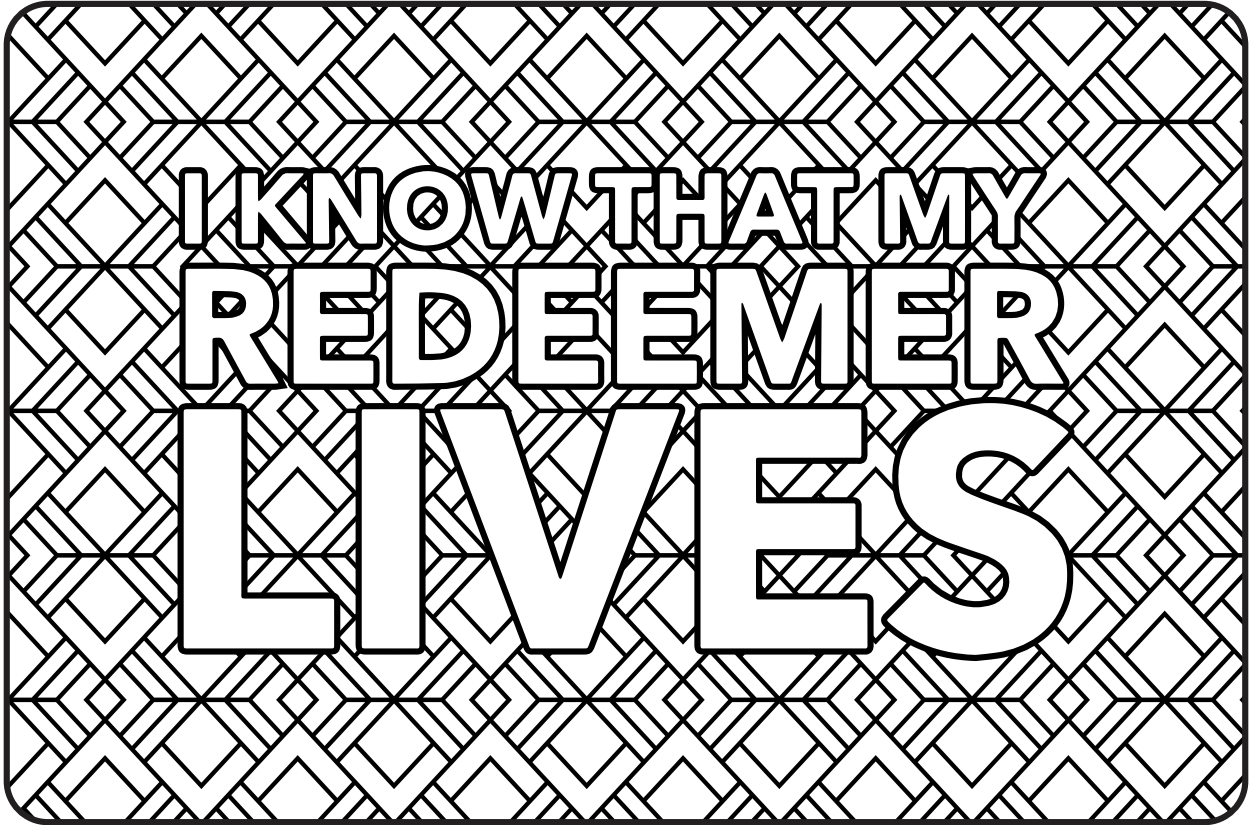


August 1-7

Job 1-3; 12-14; 19; 21-24; 38-40; 42

"Yet Will I Trust in Him"



Handwriting Practice

Practice your handwriting by tracing the sentence below. Then use the blank lines to write the sentence on your own.

Good friends uplift and encourage each other.

Blank handwriting practice lines consisting of a solid top line, a dashed middle line, and a solid bottom line, provided for independent practice of the sentence.

August 1-7

Job 1-3; 12-14; 19; 21-24; 38-40; 42

“Yet Will I Trust in Him”

Letter Sudoku

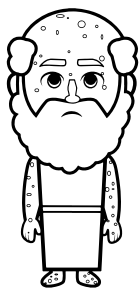
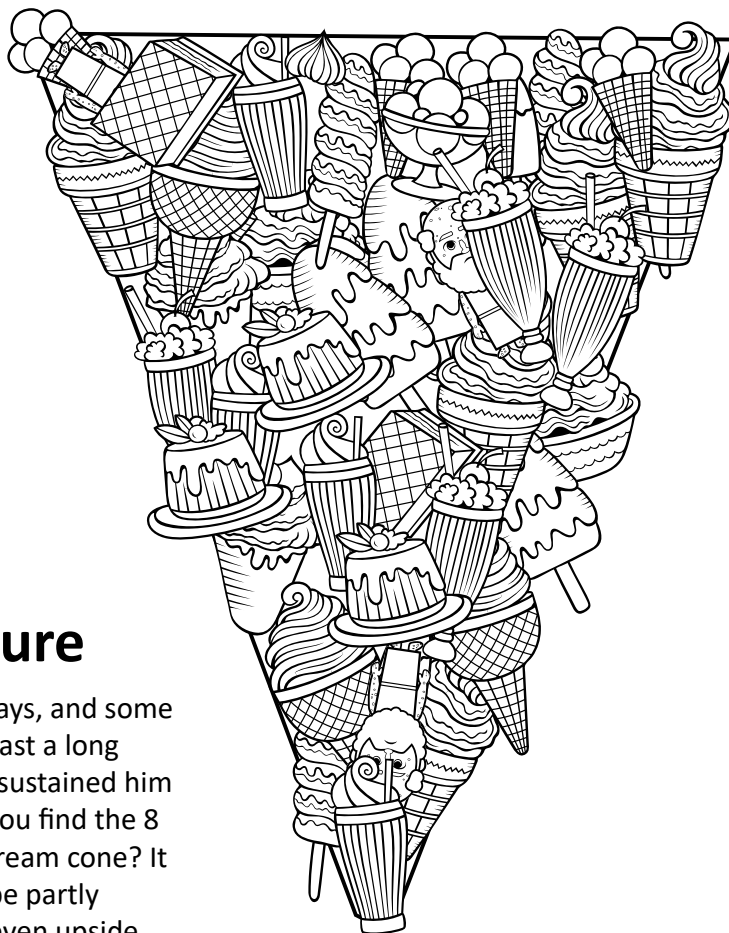
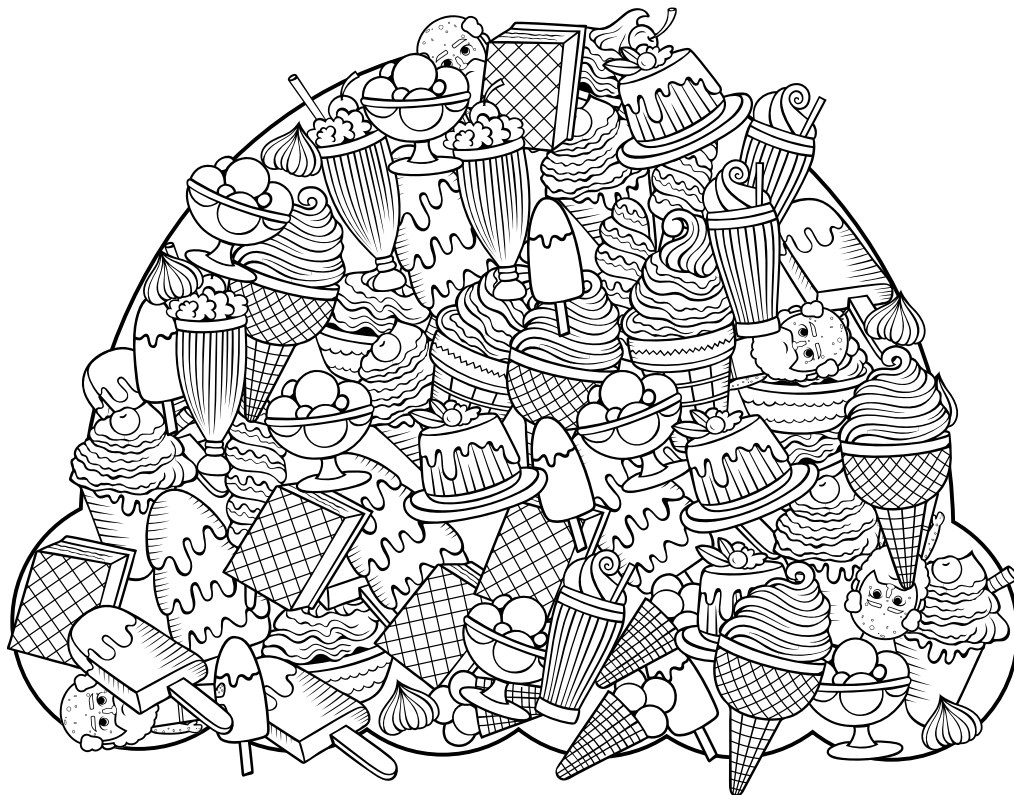
Instructions: Solve the letter sudoku puzzle the same way you’d solve a numeric sudoku. You can check your puzzle against the answer key on ColorMeChristian.org. Every column, row, and group of nine must contain every letter in the words **LATTER DAY**. Letters used twice in a word will be used twice in every group below.

Job 19:23-27

Oh that my words were now written!
oh that they were printed in a book!
That they were graven with an iron
pen and lead in the rock for ever! For
I know that my redeemer liveth, and
that he shall stand at the **latter day**
upon the earth: And though after my
skin worms destroy this body, yet in
my flesh shall I see God: Whom I shall
see for myself, and mine eyes shall
behold, and not another; though my
reins be consumed within me.

R				L			A	
			T	Y			R	D
			E				L	T
D		L			E			T
						D	E	L
T			L			R	A	
		R					D	A
E	L				T			R
		Y		A	R			E





Hidden Picture

Everyone has difficult days, and some people have trials that last a long time. Job's faith in God sustained him through his trials. Can you find the 8 Jobs hidden in the ice cream cone? It will be tricky; Job may be partly hidden, on his side, or even upside down!

August 1-7

Job 1-3; 12-14; 19; 21-24; 38-40; 42

“Yet Will I Trust in Him”

Wacky Word Trails

Instructions: Start with the circled letter, use the clues to find and mark the trail of letters of all the connected bolded words from the scripture through the maze to the last letter. The path can wander up, down, left, and right at any point, even in the middle of the word.

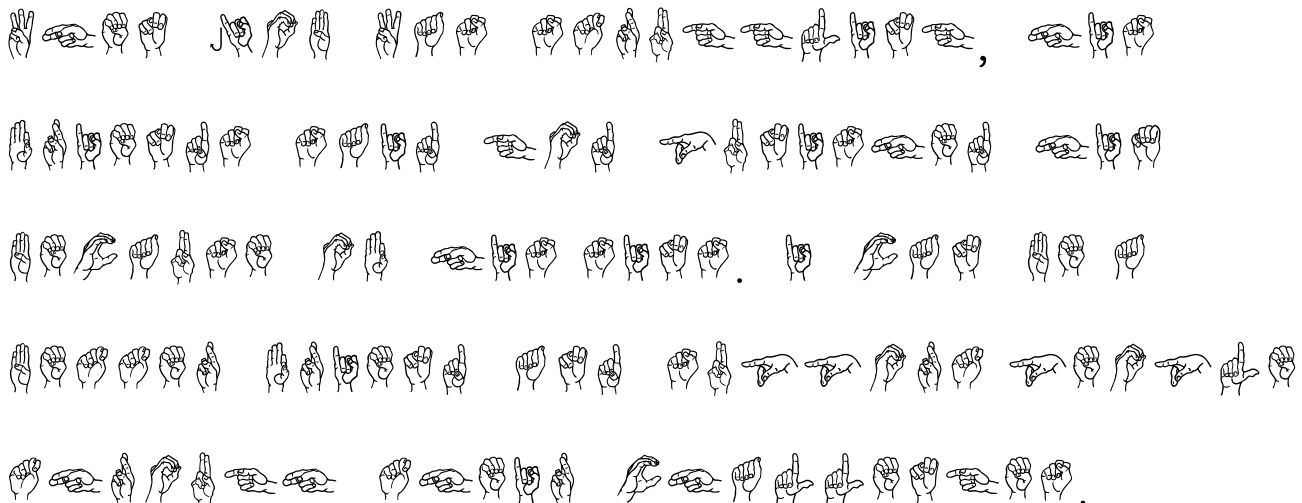
Job 16:1-5

Then **Job** answered and said, I have **heard** many such things: **miserable comforters** are ye all. Shall **vain words** have an **end**? or what **emboldeneth** thee that thou **answerest**? I also could **speak** as ye do: if your **soul** were in my soul's stead, I could **heap** up words **against** you, and **shake mine head** at you. But I would **strengthen** you with my **mouth**, and the **moving** of my **lips** should **assuage** your **grief**.

L	U	N	N	E	D	W	O	U	A	G	E	A	G	X
A	V	H	W	A	R	D	R	S	Y	A	N	I	A	D
I	P	E	F	E	H	S	A	S	N	U	S	T	M	A
N	S	A	K	M	E	O	P	B	O	J	H	T	O	U
T	R	V	T	I	N	H	S	L	D	E	N	E	H	T
I	O	S	V	W	Q	E	P	I	L	O	B	M	E	J
R	Y	Y	Y	N	P	A	P	H	L	S	L	R	J	K
D	F	R	O	O	C	D	A	E	P	Z	N	E	F	X
H	E	T	F	M	R	X	J	I	L	M	C	G	U	R
S	R	I	T	M	I	N	G	X	E	A	C	E	R	X
S	T	R	S	O	V	G	S	E	J	I	D	X	J	H
R	N	E	E	T	O	E	H	L	R	E	S	I	Q	Q
E	H	N	R	S	E	K	A	B	A	B	Z	M	A	P
N	T	G	E	Q	E	N	R	I	E	O	U	L	B	C
A	N	S	W	I	L	D	G	Q	F	S	A	B	D	F

Translation Station

Instructions: Translate the sign language letters below into English to discover the hidden message. Write the alphabet letter beneath each hand sign. Use the key at the back of the book to help you.



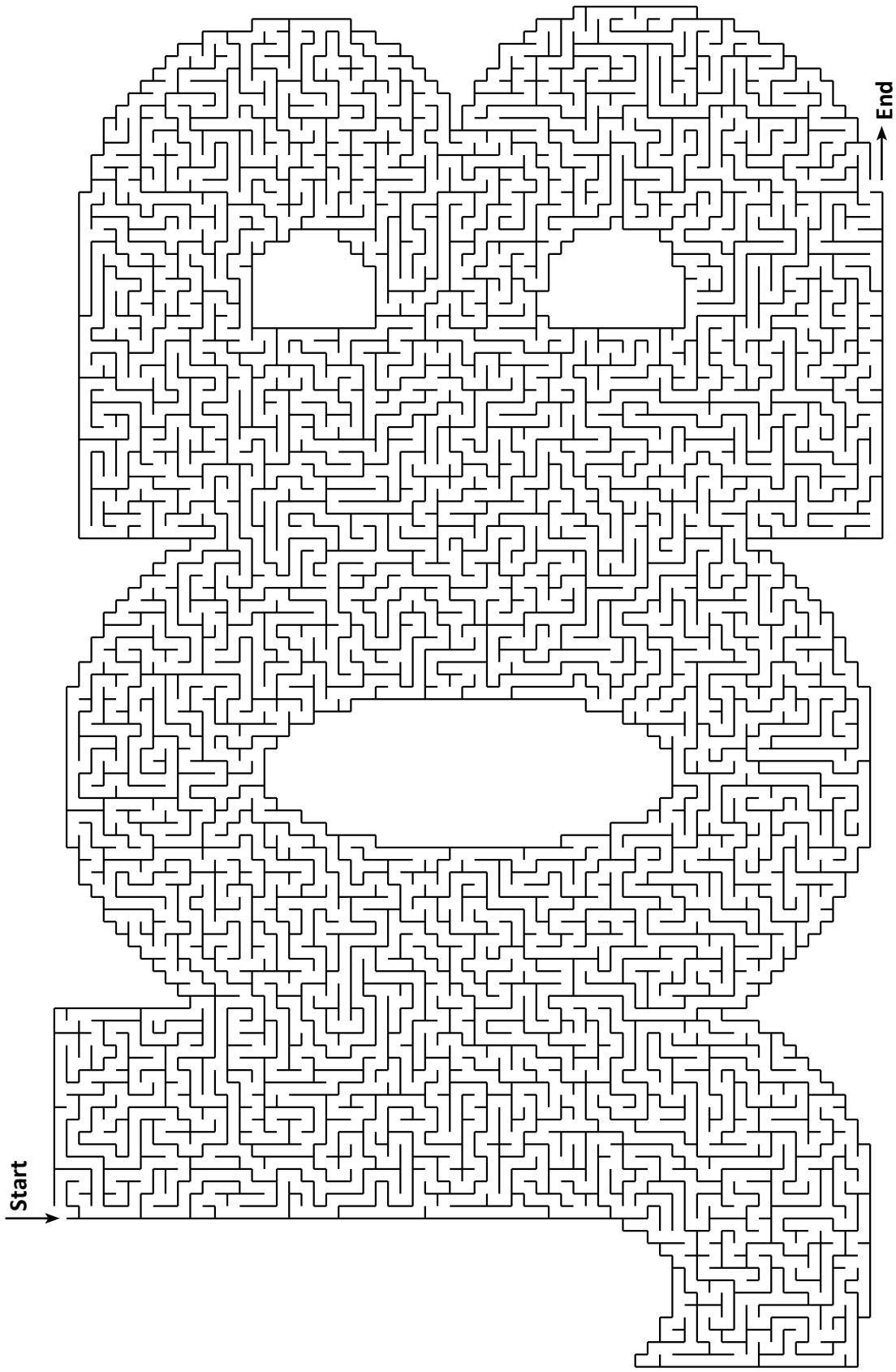
August 1-7

Job 1-3; 12-14; 19; 21-24; 38-40; 42

“Yet Will I Trust in Him”

Come, Follow Me Primary Manual, 2022

Everyone has difficult days, and some people have trials that last a long time. Job’s faith in God sustained him through his trials.



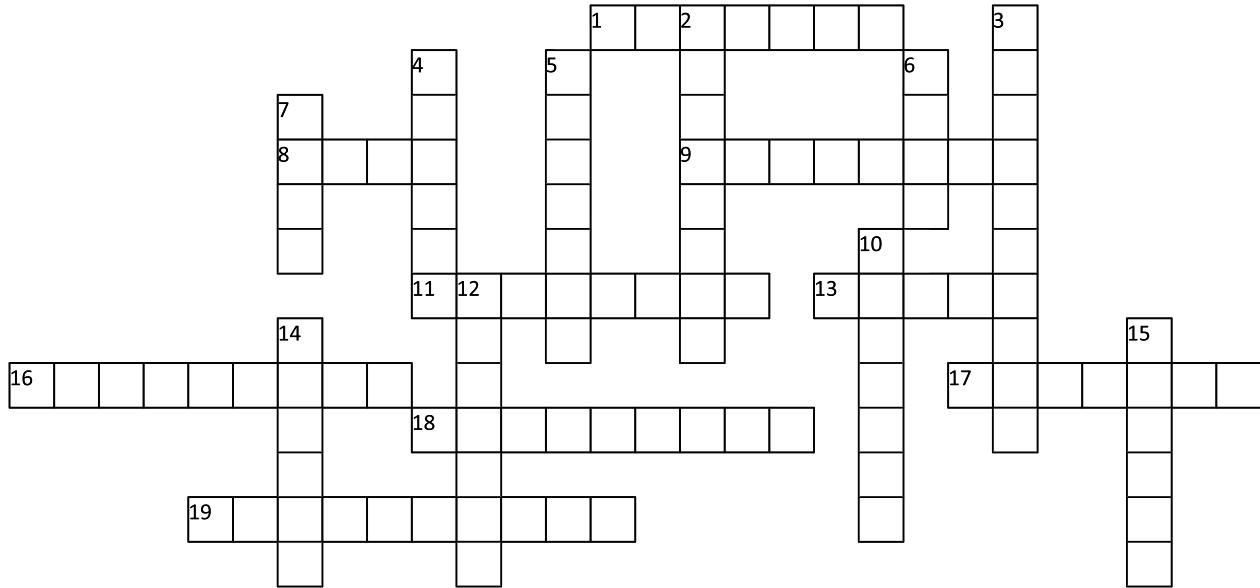
August 1-7

Job 1-3; 12-14; 19; 21-24; 38-40; 42

“Yet Will I Trust in Him”

Instructions: Using the Across and Down clues, write the correct words in the numbered grid below. Hint: all of the words in the crossword come from the scripture below.

Job 1:1, 13-22



ACROSS

1. succeed in avoiding or eluding something dangerous, unpleasant, or undesirable
8. a group of male domesticated bovine animals
9. a person working in the service of another, plural
11. avoid and stay away from deliberately
13. woolly ruminant mammal kept for its wool and meat; known for its tendency to follow others in its flock
16. of or relating to ancient Chaldea or its people or language or culture, plural
17. complete, whole, and fully developed; totally righteous; perfect can also mean without sin or evil
18. a person who carries a communication to a recipient

DOWN

2. to destroy, by separating the parts of a thing, by decomposition, as by fire, or eating, devouring, and annihilating the form of a substance
3. the activity of cherishing as divine
4. a sleeveless garment like a cloak but shorter
5. having or showing a strict regard for what is morally right
6. torn asunder; split or burst by violence
7. a hollow muscular organ in a woman in which a developing baby grows
10. attacked; accused
12. an ancient people of South Arabia; they founded the kingdom of Saba, which was believed to be the biblical land of Sheba, plural