

December 13 – 19

The Family: A Proclamation to the World

“The Family Is Central to the Creator’s Plan”

Instructions: Solve this word sudoku puzzle the same way that you’d solve a numeric sudoku. Each of the bold words in the scripture below is found once in every row, column and 3×3 box. Check your answers on ColorMeChristian.org

The Family - A Proclamation to the World, 3rd paragraph, Sentence 1

In the premortal realm, spirit sons and daughters knew and worshipped God as their Eternal Father and accepted His **plan** by which His children could obtain a physical **body** and gain earthly **experience** to **progress** toward **perfection** and ultimately **realize** their divine **destiny** as heirs of **eternal life**.

body			plan				realize	
		realize		body		plan	life	
		life	progress		realize			
		experience	life	plan	eternal			
	progress	eternal			body			
destiny	body		realize				experience	
experience		body	perfection				eternal	
realize		destiny	eternal				body	
eternal			body			perfection	plan	

December 13 – 19

The Family: A Proclamation to the World

“The Family Is Central to the Creator’s Plan”

Unscrambler

Instructions: Can you unscramble the words below? If you need a hint, look at the bold words in the scripture below.

The Family: A Proclamation to the World

All **human beings**—male and female—are **created** in the **image** of God. Each is a **beloved** spirit son or daughter of **heavenly parents**, and, as such, each has a **divine nature** and **destiny**.

raecetd _____

eeyhvna _____

rntapse _____

manhu _____

grutaedh _____

esnidy _____

ibsng _____

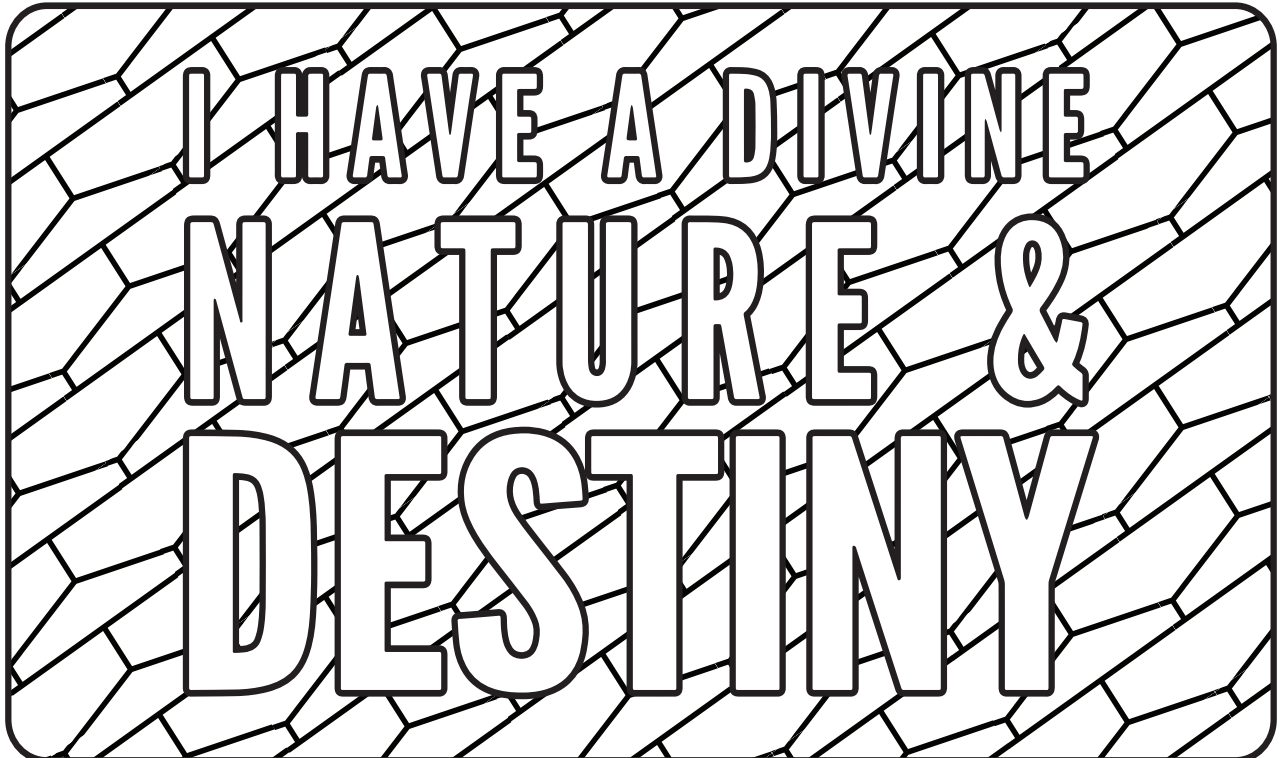
inidev _____

obveled _____

naeutr _____

osn _____

gmiae _____



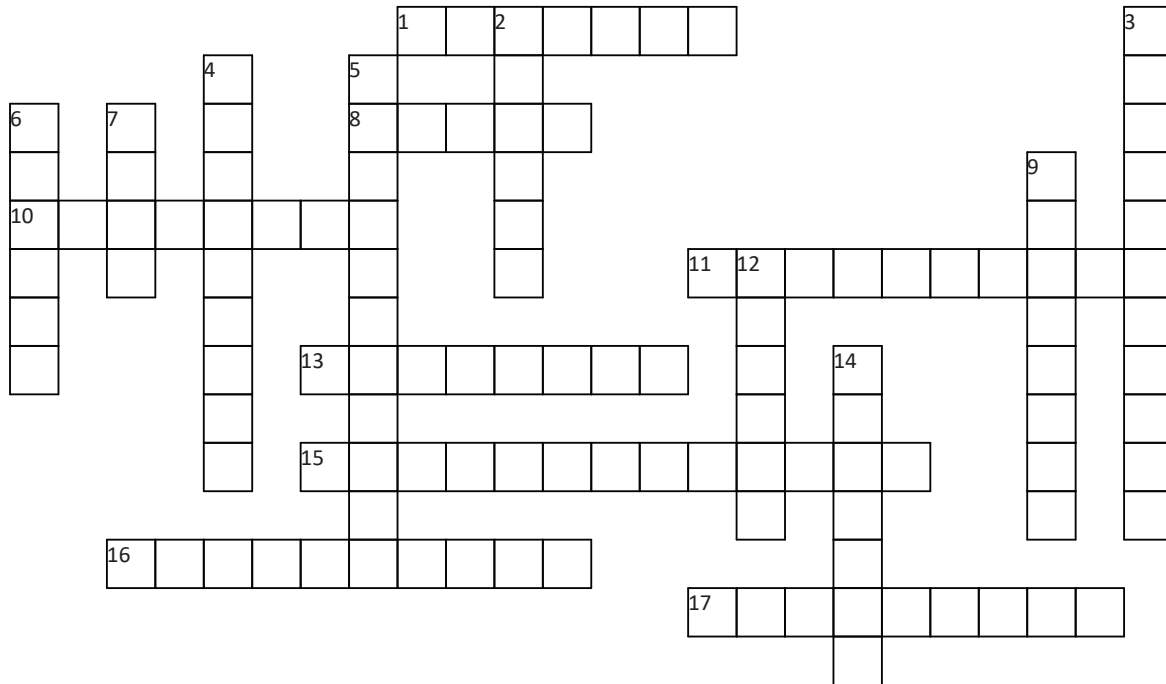
December 13 – 19

The Family: A Proclamation to the World

“The Family Is Central to the Creator’s Plan”

Instructions: Using the Across and Down clues, write the correct words in the numbered grid below. Hint: all of the words in the crossword come from the scripture below.

The Family Proclamation, paragraph 7, Beginning with the sentence, “The family is ordained of God.”



ACROSS

1. provide with nourishment
8. having the same quantity, value, or measure as another
10. the state of being a husband and wife voluntarily joined for life
11. the process of adjusting or conforming to new conditions
13. the quality of being faithful
15. a characteristic that covers all the attributes of God; describes a person who is Godly or Godlike
16. a deep awareness of and sympathy for another's suffering
17. ideas or principles taught by an authority

DOWN

2. bring up and care for a child until they are fully grown
3. worthy of or requiring trust; held accountable
4. caused by law or conscience to follow a certain course
5. the condition of being essential or indispensable
6. parents and children as a group
7. activity involving mental or physical effort done in order to achieve a purpose or result
9. human offspring (son or daughter) of any age
12. of, from, or like God
14. regard highly; think much of

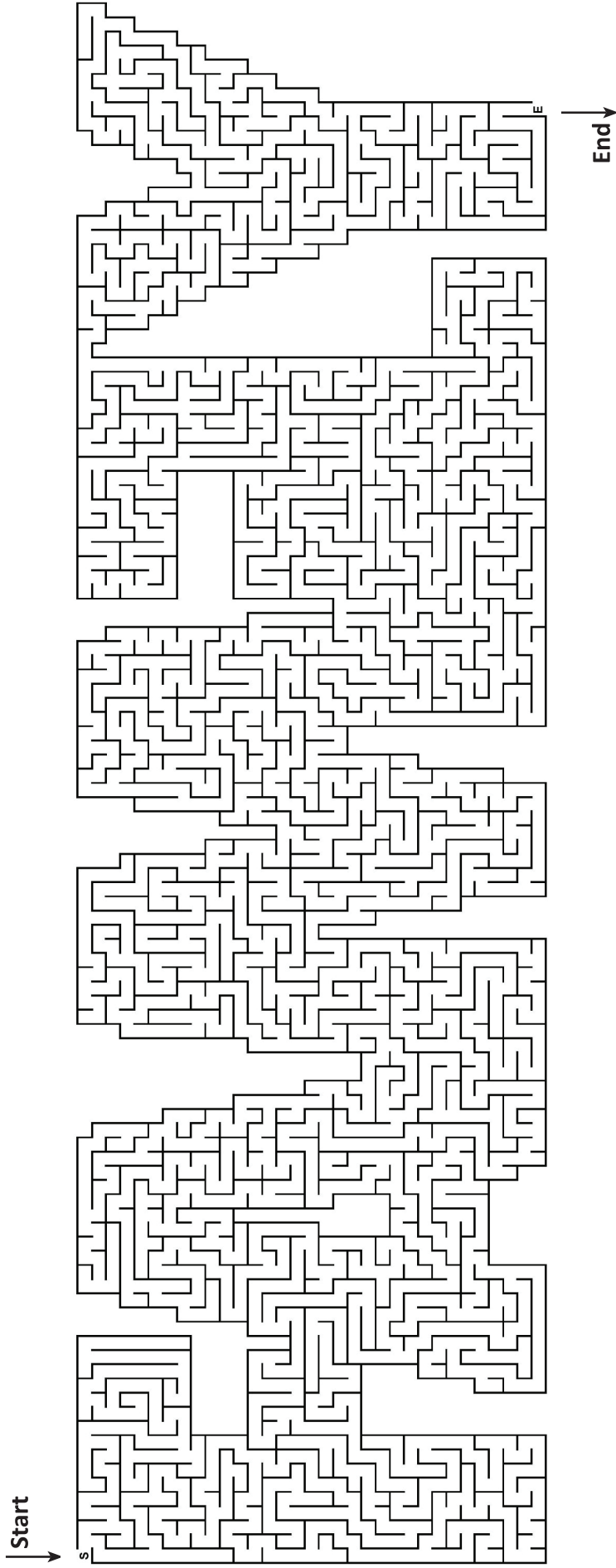
December 13 – 19

The Family: A Proclamation to the World

“The Family Is Central to the Creator’s Plan”

Come Follow Me Primary Manual, 2021

Families are central to Heavenly Father’s plan.



December 13 – 19

The Family: A Proclamation to the World

“The Family Is Central to the Creator’s Plan”

Wacky Word Trails

Instructions: Start with the circled letter, use the clues to find and mark the trail of letters of all the connected bolded words from the scripture through the maze to the last letter. The path can wander up, down, left, and right at any point, even in the middle of the word.

The Family - A Proclamation to the World

We **warn** that **individuals** who **violate covenants of chastity**, who **abuse spouse** or **offspring**, or who **fail to fulfill family responsibilities** will one day **stand accountable before God**.

A R L L I H V O D N A T S S L
B H F J F A I F F S P R D U A
U E J Z L U F I M G N I I V Z
S B P O Z L Y L A F I N D I K
E T H Q K H Y Y Y R S E I L L
A O U N T A R M B G X I T I O
C C S U L B A W P S D S V B Q
O C E O E F A W G Q N B J I S
B H V P S L I D Q N G R E E N
S A D G A W S W A R O D S P O
T I T I G S T N A N E V P Q S
H T Y B B N O O L S C O K S G
B M Z E F W L I A T E R I K P
C P R X O R E V P S K T W S J
X Z G Z W O N P A M R R C W P

Handwriting Practice

Practice your handwriting by tracing the sentence below. Then use the blank lines to write the sentence on your own.

Families are happiest when they follow Jesus Christ.

Blank handwriting practice lines for independent writing.

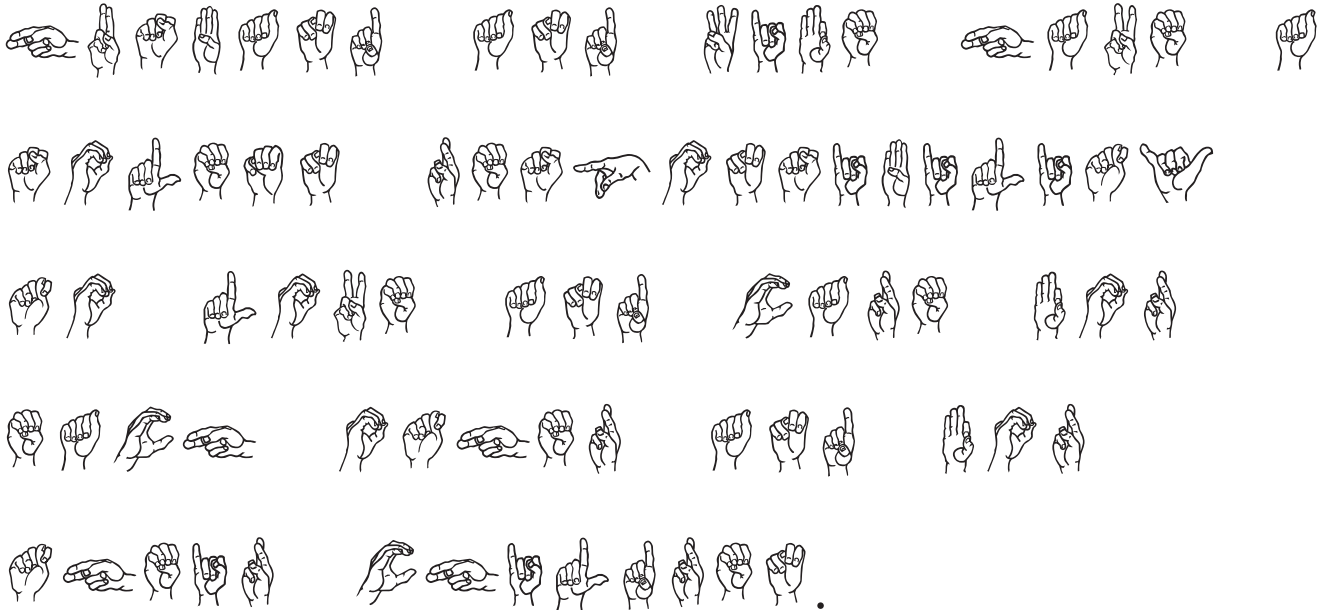
December 13 – 19

The Family: A Proclamation to the World

“The Family Is Central to the Creator’s Plan”

Translation Station

Instructions: Translate the sign language letters below into English to discover the hidden message. Write the alphabet letter beneath each hand sign. Use the key at the back of the book to help you.



wardcartoonist.com

WORK AT HOME: SURE.
SCHOOL AT HOME: WHY NOT?
LOVE AT HOME: SUDDENLY A BIT
MORE DICEY.

©Arie Van De Graaff



Arie Van De Graaff