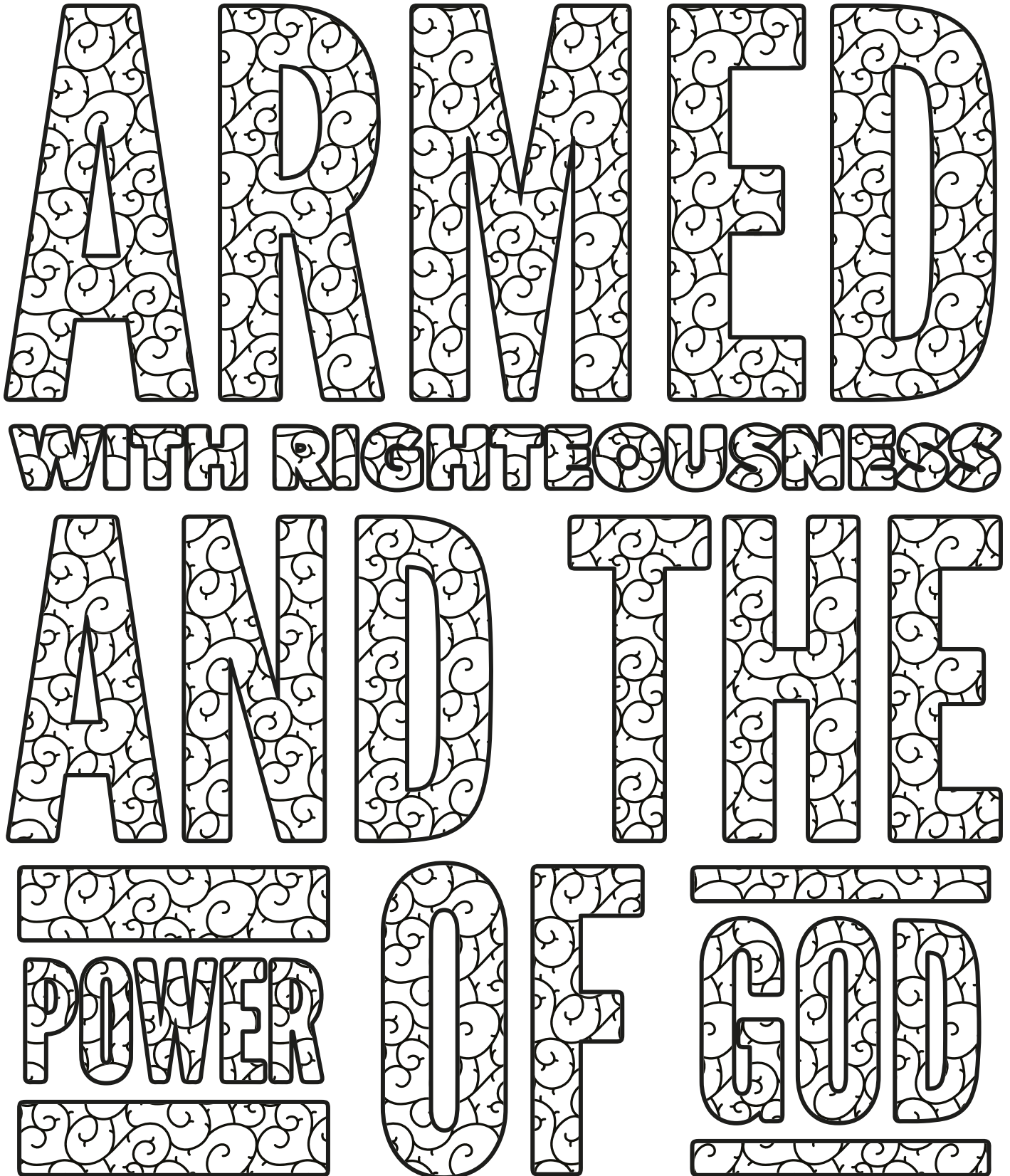


January 20–26

1 Nephi 11–15

“Armed with Righteousness and the Power of God”



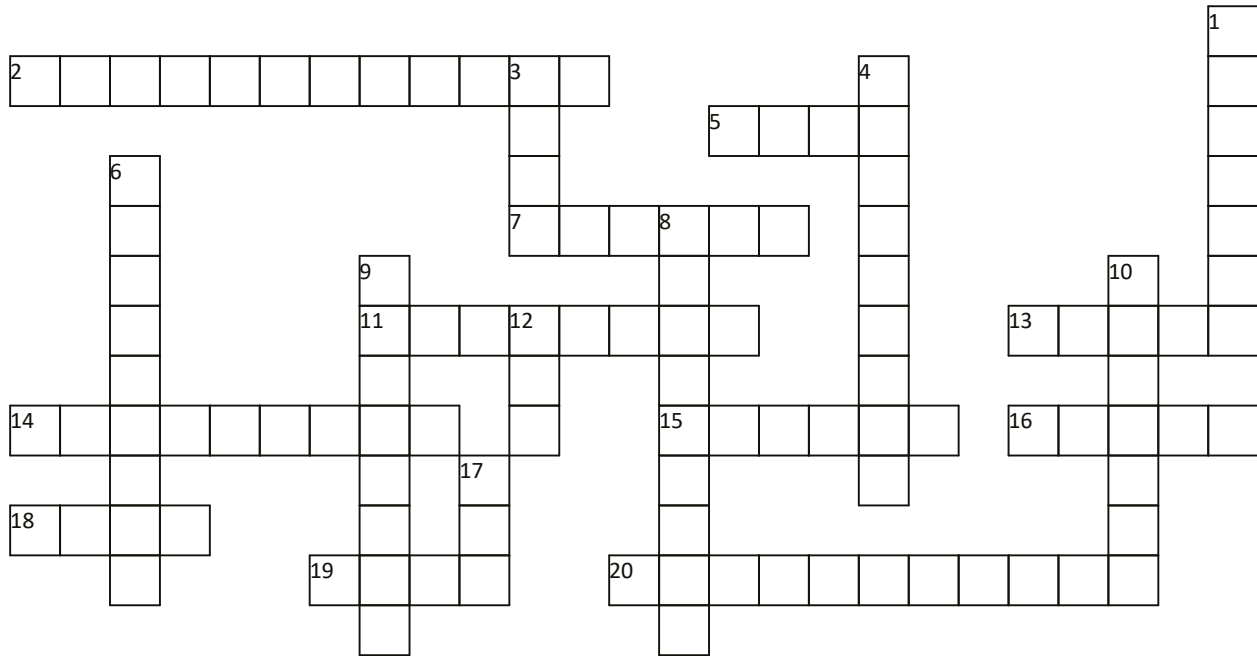
January 20–26

1 Nephi 11–15

“Armed with Righteousness and the Power of God”

Instructions: Using the Across and Down clues, write the correct words in the numbered grid below. Hint: all of the words in the crossword come from the scripture below.

1 Nephi 15:23–25

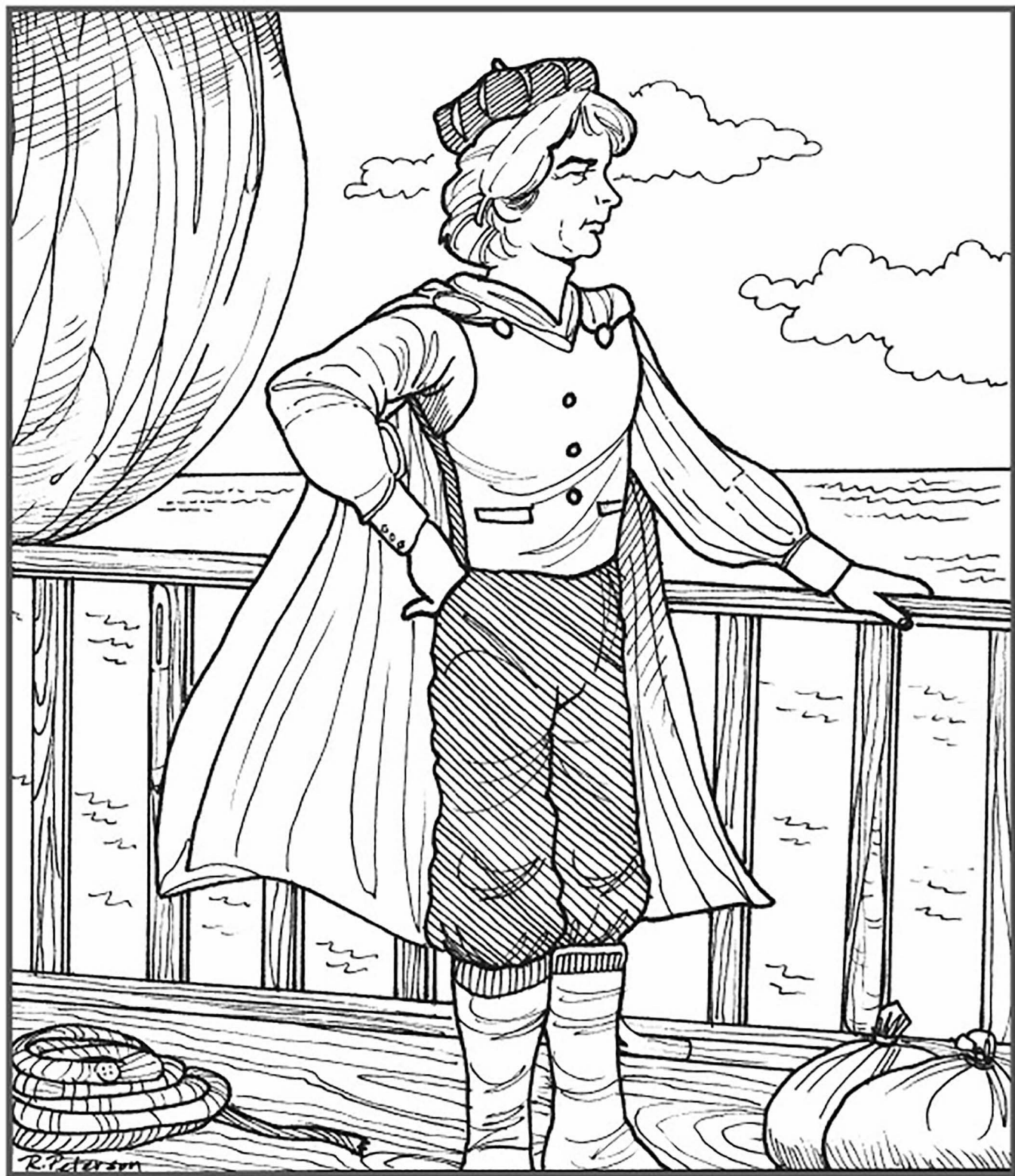


ACROSS

2. eternal gospel principles that are necessary for our exaltation when given by God or the prophets
5. a synonym for spirit; as a spirit child of Heavenly Father you existed as a spirit before this life on earth.
7. spur on or encourage
11. forceful exertion
13. like or suggestive of a flame
14. have ownership of
15. pass from physical life
16. a tiny missile with a pointy end that can be a weapon or part of a game
18. a unit of language that native speakers can identify
19. careful attention
20. an event that completely ruins something

DOWN

1. an inherent cognitive or perceptual power of the mind
3. a plant having a permanently woody main stem or trunk, ordinarily growing to a considerable height, and usually developing branches at some distance from the ground
4. unable to see
6. someone who offers opposition
8. defeat by superior force
9. recall knowledge; have a recollection
10. listen and do
12. a long thin item to guide you when you hold onto it
17. the one Supreme Being, the creator and ruler of the universe



Christopher Columbus

BY ROBERT A. PETERSON

The great explorer Christopher Columbus was seen by the prophet Nephi in a vision. (See 1 Nephi 13:12.) "Explore" this picture until you find a boot, a carrot, a comb, an eagle's head, a feather, a fork, a knife, a pen, a saltshaker, a spoon, a water pitcher, and a woman's shoe. Then color the picture.

January 20–26

1 Nephi 11–15

“Armed with Righteousness and the Power of God”

Instructions: Solve this word sudoku puzzle the same way that you’d solve a numeric sudoku. Each of the bold words in the scripture below is found once in every row, column and 3×3 box.

1 Nephi 13:29

And after these **plain** and **precious** things were taken away it goeth forth unto all the nations of the Gentiles; and after it goeth forth unto all the nations of the **Gentiles**, yea, even across the many waters which thou hast seen with the Gentiles which have gone forth out of **captivity**, thou seest—because of the many plain and precious things which have been **taken** out of the book, which were plain unto the **understanding** of the children of men, according to the plainness which is in the **Lamb** of God—because of these things which are taken away out of the **gospel** of the Lamb, an exceedingly great many do stumble, yea, insomuch that Satan hath great **power** over them.

captivity	Gentiles		power			taken		
Lamb		gospel	Gentiles	taken	precious			
		taken			captivity	Lamb	Gentiles	
	gospel	Gentiles	understanding		plain			Lamb
understanding		captivity		gospel	Gentiles			
	power		Lamb		taken	Gentiles		
Gentiles	taken			precious	gospel			
	plain					gospel	Lamb	taken
		understanding	taken			precious	plain	

January 20–26

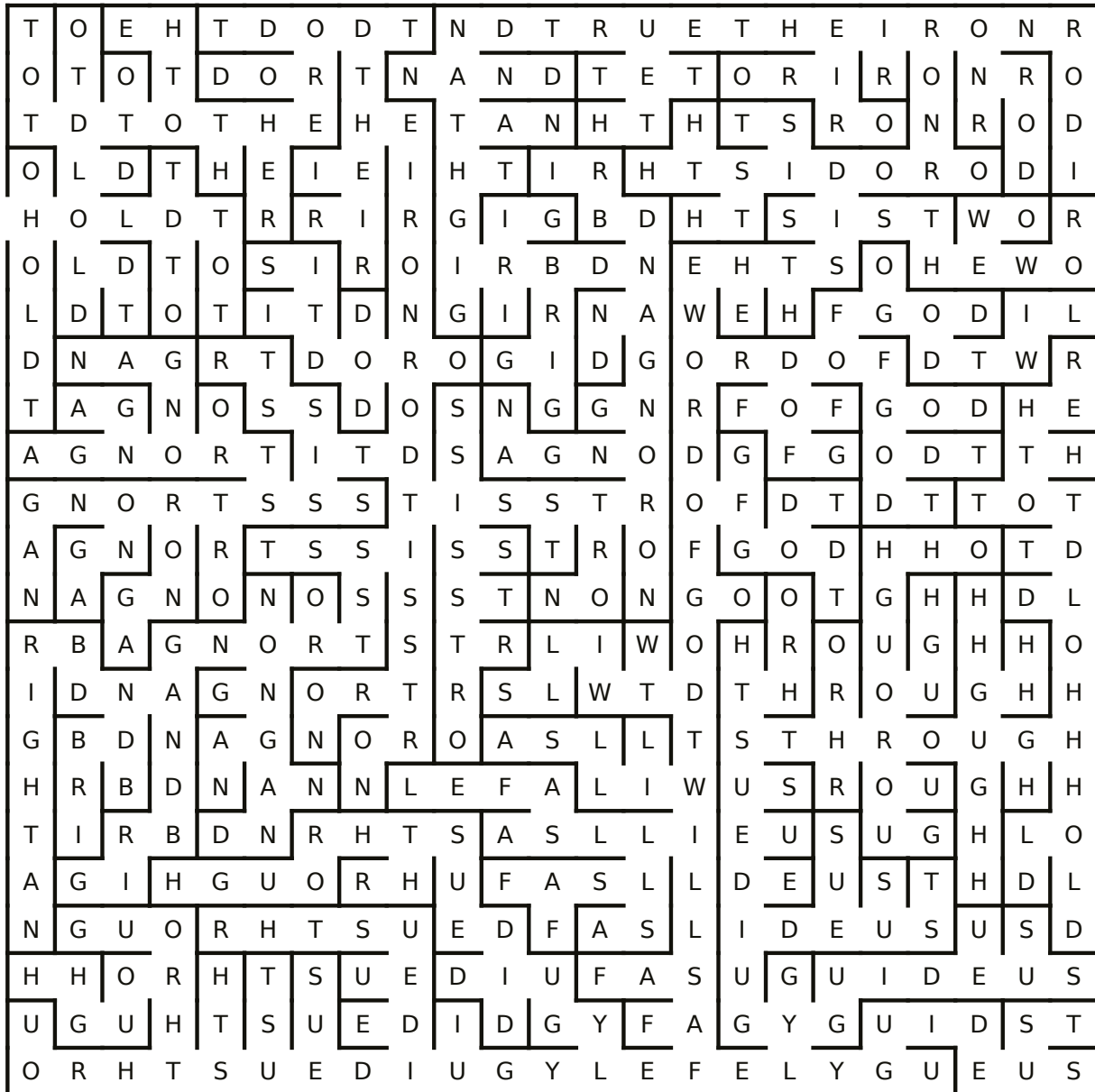
1 Nephi 11–15

“Armed with Righteousness and the Power of God”

Instructions: Connect all of the letters in the phrase **bolded** below. Don’t be tricked by letters that take you into a dead end! There is only one path through the maze. Fill in the blanks below to find the hidden message.

-----, -----; '-----, -----.
-----; '-----.
(Hymn No. 274)

Start



Finish

January 20–26

1 Nephi 11–15

“Armed with Righteousness and the Power of God”

Lehi’s Vision

By Corliss Clayton, September 1989 Friend

Instructions: After reading Lehi’s dream on pages 20–22, match the things that Lehi saw in his vision with what they stand for. Read the scriptures after each item, if you need help.

- | | |
|---|---|
| 1. Large and spacious field (1 Ne. 8:20) | a. Pride of the world |
| 2. Tree (1 Ne. 15:21–22) | b. Love of God |
| 3. White fruit (1 Ne. 8:11; 1 Ne. 15:36; and D&C 14:7) | c. Temptations of Satan |
| 4. Fountain of filthy water (1 Ne. 12:16; 1 Ne. 15:26–29) | d. A world |
| 5. Rod of iron (1 Ne. 15:23–25) | e. Depths of hell |
| 6. Straight and narrow path (2 Ne. 31:9–10) | f. Eternal life |
| 7. Fountain of living waters (1 Ne. 11:25) | g. Tree of life |
| 8. Mists of darkness (1 Ne. 12:17) | h. Obedience to commandments |
| 9. Great and spacious building (1 Ne. 11:36) | i. World and those who fight against Apostles |
| 10. Multitude in building (1 Ne. 11:34–35) | j. Word of God |

Answers: (1) d, (2) g, (3) f, (4) e, (5) j, (6) h, (7) b, (8) c, (9) a, (10) i.



PRIOR TO ITS FALL, THE GREAT AND SPACIOUS BUILDING FIRST HAD TO DEAL WITH A BUILDING INSPECTOR.